

**SCIENCE  
MUSEUM**



**BECOME  
A PATRON**

**BECOME A PATRON AND HELP TRANSFORM THE WAY THAT YOUNG PEOPLE THINK AND FEEL ABOUT SCIENCE.**

**WITH YOUR SUPPORT, WE ARE ABLE TO CREATE NEW GALLERIES, EXHIBITIONS AND LEARNING PROGRAMMES TO INSPIRE THE NEXT GENERATION TO USE SCIENCE TO CREATE A BETTER TOMORROW.**



Visiting schoolchildren see the universe through an astronaut's eyes in our *Exploring Space* gallery.



Dame Mary Archer, Chair of the Science Museum Group, and Sir Ian Blatchford, Director and Chief Executive of the Science Museum Group, at the opening of *Cosmonauts: Birth of the Space Age* at the Science Museum, London.

## JOIN US

The Science Museum is a unique place. It opens a world of discovery and introduces future generations to science, technology, maths and engineering. It also offers a platform for cutting-edge research and for commemorating the titans of the scientific world.

Each year, we welcome over 3 million visitors through our doors. Our goal is to spark wonder in the problem-solvers of tomorrow and place scientific discovery at the heart of culture. We are dedicated to raising scientific literacy and helping people develop STEM skills that will lead to a lifelong love of science.

As a Patron of the Science Museum, what will your discovery be? With exclusive access to our people, collections and exhibitions through

a bespoke programme of private views, behind-the-scenes tours and exciting lectures, there are endless possibilities.

The generosity of our Patrons underpins everything we do. We would love to welcome you into our thriving community and look forward to seeing you at the museum.

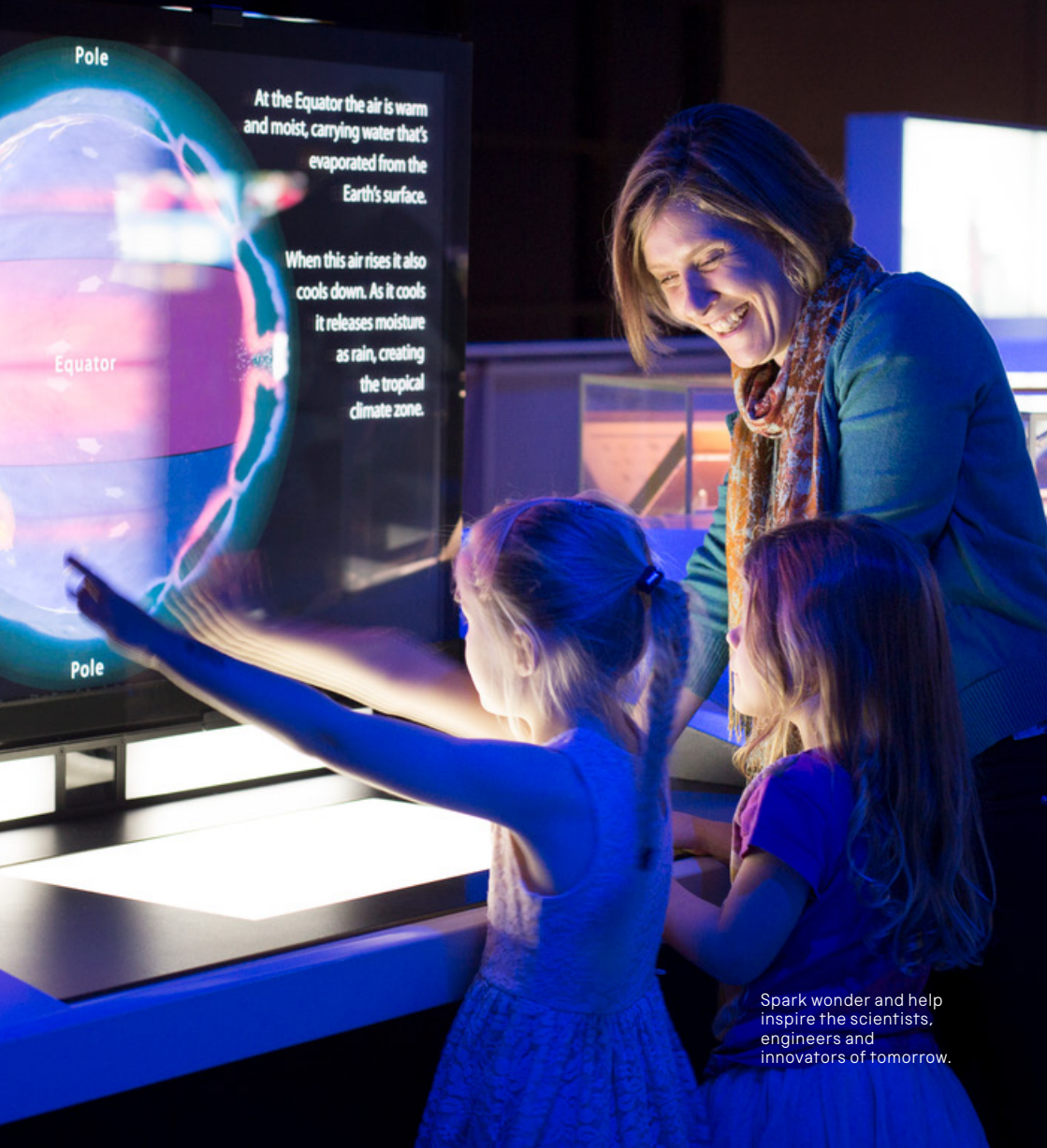
Dame Mary Archer  
Chair of the Science Museum Group

Sir Ian Blatchford  
Director and Chief Executive of  
the Science Museum Group



*'Becoming a Patron was the best thing I ever did for my family.'*

Dr John Collins, Commercial Director, Synbicate and Science Museum Patron



Spark wonder and help inspire the scientists, engineers and innovators of tomorrow.

## WHAT IS IT LIKE TO BE A PATRON?

**As a Science Museum Patron you will get to know our curators, conservators and the brightest minds in science through a diverse series of exclusive benefits and a programme of special events.**

## BEHIND-THE-SCENES TOURS

Join us for private curator-led tours of our galleries and object stores to explore parts of the museum that are usually inaccessible to the public. As a Patron you will get to know our collections through our experts' eyes in a more intimate and relaxed out-of-hours setting. We are also pleased to offer tours of our National Collections Centre in Wiltshire, which is at the heart of a major project to transform how our collection is stored, accessed and shared.

## EXCITING TRIPS

We also provide our Patrons with exciting opportunities to experience at first hand the inner workings of world-leading organisations that are pushing the boundaries of science in their fields. In past years our Patrons have enjoyed unique behind-the-scenes tours of the Mercedes AMG Petronas Formula One Team Operations Centre, the Red Bull Racing factory, CERN, the Kielder Observatory and the Multiple Sclerosis and Parkinson's Brain Bank.

Reignite your scientific curiosity as a Science Museum Patron.





## PREVIEWS OF MAJOR EXHIBITIONS AND GALLERIES

As well as benefiting from free and unlimited exhibition entry to all five Science Museum Group sites across the UK, our Patrons are also invited to see major exhibitions and new galleries before anyone else, with exclusive invitations to opening-night parties and regular private views.

## ACCESS TO LEADING SCIENTIFIC MINDS

Through our thought-provoking lecture series we explore the biggest topics and challenges of the present day. In the past we have been privileged to hear from Professor Stephen Hawking, Lord Rees of Ludlow, Sir Tim Berners-Lee and Sir Roger Penrose. Recent speakers have also joined us from Google DeepMind, the World Health Organization and the LIGO Scientific Collaboration.



## THE SMITH CENTRE

Occupying a building originally constructed in 1890 and previously used as a Royal Mail sorting office, The Smith Centre is now a beautifully refurbished space for you to enjoy when you visit the museum.

We have carefully restored many of the original materials – including glazed brick, parquet, steel and timber – to create a salon atmosphere which is complemented by displays of special objects from the museum's collections.

We invite our Patrons to use this space to relax with friends and family and enjoy a tea or coffee after viewing an exhibition during the week. As laptop and mobile phone charging points are available throughout, our Patrons are also welcome to use these rooms as a workspace.

## EXCLUSIVE EVENTS

Our Galileo and Newton Patrons are also invited to attend the Director's Annual Dinner, our most exclusive event of the year. Speakers at past Annual Dinners have included Nobel Prize-winner Sir Fraser Stoddart, Director-General of CERN Dr Fabiola Gianotti and US National Medal of Science recipient Dr Craig Venter. Our Newton Circle Patrons also receive exclusive invitations to our Newton Dinners, which allow them to hear from scientific experts who explore the most important issues in contemporary science.

We invite Patrons to get closer to our collections and museums through an exciting array of exclusive events.

*'The Science Museum was an important part of my childhood. Seeing Watt's massive spinning engine as you enter the building is a visceral example of the progress society can achieve through science, engineering and perseverance. That engine, and their many other exhibitions were key to me studying software engineering in later life.'*

Andrew Eland, Engineering Director,  
DeepMind Health and Science Museum Patron

Sir Tim Berners-Lee, inventor of the World Wide Web, and Nobel Prize-winner Sir Venki Ramakrishnan enjoy a reception in The Smith Centre to celebrate the 30th anniversary of the World Wide Web.



**YOUR BENEFITS**

There are three levels of patronage to choose from, each opening the door to a range of exclusive benefits and unique opportunities.

**Your donation is essential. It is what enables us to connect people with science through our collections, learning and museums so we can inspire a better world.**

	<b>BRUNEL</b>	<b>GALILEO</b>	<b>NEWTON</b>
	Suggested payment: £1,000 per annum	Suggested payment: £5,000 per annum	Suggested payment: £10,000 per annum
	Minimum payment covers <b>benefits only</b> Minimum payment £400, suggested donation £600*	Minimum payment covers <b>benefits only</b> Minimum payment £1,500, suggested donation £3,500*	Minimum payment covers <b>benefits only</b> Minimum payment £2,100, suggested donation £7,900*
An exclusive programme of Patrons' events including eg out-of-hours private viewings, annual curator-led tours of our collections, our lecture series and visits to sites of scientific interest	✓	✓	✓
Invitations to Science Museum gallery and major exhibition opening receptions	✓	✓	✓
Unlimited exhibition entry for you and a guest across all Science Museum Group sites including the Science Museum in London, the Science and Industry Museum in Manchester, the National Railway Museum in York, Locomotion in Shildon, and the National Science and Media Museum in Bradford	✓	✓	✓
A complimentary annual pass to <i>Wonderlab: The Equinox Gallery</i> for two adults and two children	✓	✓	✓
Regular newsletters, keeping you up to date with all major developments at the Science Museum Group	✓	✓	✓
Weekday daytime drop-in use of The Smith Centre**	✓	✓	✓
Acknowledgment of your support as a Patron in the Science Museum Group's Annual Review and on The Smith Centre Donor Wall	✓	✓	✓
An invitation to the Director's Annual Dinner – the most exclusive event in the Science Museum's event calendar		✓	✓
Hire of The Smith Centre for a private event***		✓ 1 use	✓ 2 uses
An annual Science Museum publication signed by one of our curators		✓	✓
Membership to the Newton Dinner Circle, an intimate and enlightening series of dinners featuring speeches by leading scientific experts			✓
Recognition on the Main Donor Board within the Science Museum			✓

\* The donation portion is a suggested donation to which Gift Aid provisions apply, but you may purchase the benefits package separately by paying the minimum payment and without making any further donation. Minimum payments include VAT at the standard rate. Gift Aid can be claimed on the donation portion only when made by UK taxpayers. Please indicate on the joining form whether you wish us to claim Gift Aid on your donation.

\*\* The Smith Centre opening hours are 09.00–17.00, Monday to Friday.

\*\*\* Weekday daytime use of the large meeting room only from 09.00 to 17.00. Subject to availability, an alternative venue may be provided. Catering and logistical costs not included. Please contact patrons@sciencemuseum.ac.uk for more information.



Tim Peake is joined by schoolchildren to celebrate the return of his Soyuz TMA-19M descent module to the Science Museum after a UK-wide tour where it is was visited by over 1.3 million people.

## WHAT YOUR SUPPORT MEANS – IGNITING CURIOSITY AND PRESERVING OUR SCIENTIFIC HERITAGE

Do you remember the first time we were inspired by science? Join us in our mission to spark wonder and curiosity in the next generation of scientists, engineers and innovators.

### INSPIRING VISIONARIES OF THE FUTURE

As the UK's most visited museum for school and educational groups, we play a vital role in informal learning and inspiring young people to engage with science. The Science Museum opened the world's first ever dedicated gallery for children in December 1931. It aimed to inspire young people through working models and interactive exhibitions – a role which *Wonderlab: The Equinor Gallery* continues to perform to this day. **Your support as a Patron could help us develop new interactive galleries and learning programmes to change the way that young people view science and ignite a lifetime of curiosity.**

*'Visits to the museum are far more than just learning experiences. They leave very powerful memories. They are a great source of inspiration and they also sow the seeds of future dreams.'*

Major Tim Peake, ESA astronaut

### BEYOND THE MUSEUM'S WALLS

Each year our experienced Outreach team travel 22,000km to deliver educational live science demonstrations to over 97,000 children in schools, community centres, libraries and festivals across the UK – reaching more young people than Wembley stadium can hold.

Our touring exhibitions programme enables those who are not in London to enjoy some of our extraordinary collections. Between 2017 and 2019 Tim Peake's Soyuz capsule toured the UK, visiting Bradford, County Durham, York, Manchester, Edinburgh, Peterborough, Cardiff and Belfast – reaching over a million people. **Your support as a Patron could help power these initiatives alongside our educational programmes such as the Science Museum Group Academy, a science-based training programme for teachers which will benefit 1.4 million children by 2023.**

### CONSERVING THE NATION'S SCIENTIFIC HERITAGE FOR GENERATIONS TO COME

With nearly half a million objects in our care, your support is vital in helping us to conserve our collection, make new acquisitions and create thought-provoking exhibitions. **Your support as a Patron could help fund the construction of our National Collections Centre in Wroughton, which will house over 300,000 objects.**

### CREATE WONDER AND SPARK CURIOSITY

Each year our dedicated team of curators, conservators and researchers create new galleries and exhibitions to inspire our 3.2 million visitors a year with the wonders of science. **Your support could also help us to create new blockbuster exhibitions such as *Robots*, *The Sun* and *Top Secret*, enabling us to capture new audiences and promote informal science learning.**

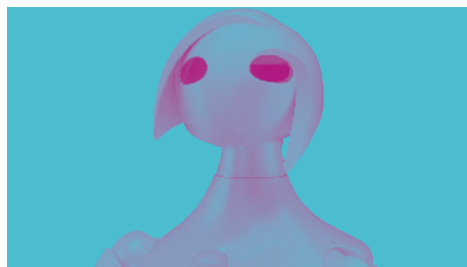


## CONNECTING YOU WITH YOUR SPECIAL INTEREST

Our Patrons community is unified by a passion for science, but we know you will have your own specific interest within science and the museum's work. In addition to our core offering, we want to tailor your patronage to your special interest.

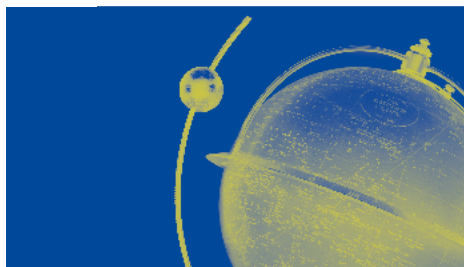


Visitors and Patrons enjoy getting hands-on with the *Robots* exhibition.



### CONTEMPORARY SCIENCE

As a member of our Contemporary Science Group you will receive behind-the-scenes updates and research from the team responsible for bringing contemporary science issues to life throughout the museum. You will also be the first to hear about our annual contemporary science exhibition in the *Tomorrow's World* gallery – a space in which we take an in-depth investigative approach to a topical area of science. Previous exhibitions have covered issues as diverse as big data, 3D printing and antibiotic resistance.



### GLOBAL OUTLOOK

As a member of our Global Outlook Group you will be informed about exciting new global partnerships being forged by the museum. You will receive updates on what is happening globally within the science community, along with updates on the Science Museum's global reach and how we are forging significant collaborations with leading museums around the world.



### SCIENTIFIC HERITAGE

The Scientific Heritage Group caters to those who want to learn in greater depth about our historic collections and our upcoming heritage-focused projects. For example, in 2019 the museum unveiled *Science City 1550–1800: The Linbury Gallery*, a stunning new permanent gallery exploring the scientific institutions, practices and professions of the 17th and 18th centuries, and charting the birth of scientific thinking in the nation's capital.



### INSPIRING FUTURES

The Inspiring Futures Group will receive regular updates on our dynamic learning and ambitious outreach programmes. This group also provides exclusive opportunities for those with children and grandchildren, giving them unique out-of-hours and behind-the-scenes access to some of our most popular exhibitions and experiences for children.





## PLEASE JOIN OUR COMMUNITY TODAY

Would you like to find out more about becoming a Patron and hear more about how your contribution can help support our work? Call 020 7942 4335 or email [patrons@sciencemuseum.ac.uk](mailto:patrons@sciencemuseum.ac.uk)

Please complete the joining form and send it to the Patrons Office at the address below, or alternatively email it to [patrons@sciencemuseum.ac.uk](mailto:patrons@sciencemuseum.ac.uk)

Please return all forms to:

Patrons Office  
Development Department  
Science Museum  
Exhibition Road  
London SW7 2DD

Thank you.

## YOUR PATRONS BENEFITS

In order to be able to claim Gift Aid on your Patrons donation, we are required to make explicit the commercial value of any benefits we may offer to Patrons. The benefit portion for Brunel Circle Patrons is £400, for Galileo Circle Patrons £1,500 and for Newton Circle Patrons £2,100. These portions are treated as a subscription fee and are not eligible for Gift Aid or tax relief. According to HM Revenue & Customs (HMRC) guidelines, we advertise these benefit packages as available for purchase without making any donation to the museum.

## MAXIMISE YOUR DONATION

If you are a UK taxpayer you can maximise your support to the Science Museum by making a Gift Aid declaration. For every £1 you donate, we can claim 25p from HMRC. If you are a higher-rate taxpayer you can also benefit by claiming higher-rate tax relief on your donation in your self-assessment tax return. The Science Museum Group is an exempt charity under the Second Schedule of the Charities Act 2011 with the Department for Digital, Culture, Media & Sport (DCMS) acting as its principal regulator for charity law purposes. It is recognised as charitable by HMRC.

## US TAXPAYERS

US citizens living in the UK and the US can make tax-efficient donations via the UK and US Friends of the Science Museum. If you would like to benefit from this, please contact the Patrons Office.





Patrons are invited to attend opening-night parties, enabling them to be some of the first to experience our latest offers.

## KEEPING IN TOUCH AND STORING YOUR DATA

Your information will be processed for administration, marketing and charitable purposes in accordance with our Privacy Policy, the General Data Protection Regulation (GDPR) and any related data protection laws applicable in the UK. We will not share your personal details without your consent nor email you about our events, fundraising and activities unless you choose to hear from us. If you have any questions regarding the use of your data, please read our Privacy Policy at [group.sciencemuseum.org.uk/privacy](http://group.sciencemuseum.org.uk/privacy) or contact us at [data.protection@sciencemuseum.ac.uk](mailto:data.protection@sciencemuseum.ac.uk). The Science Museum is part of the Science Museum Group.

The Science Museum Group has a wholly owned subsidiary trading company, SCMG Enterprises Ltd (company registration no. 2196149), set up in 1988 and operating across all the Group's museums.



## JOIN US

- I would like to join the Patrons programme
- I would like to give a gift patronage

### YOUR DETAILS (OR GIFT RECIPIENT'S DETAILS)

Title: \_\_\_\_\_ Email: \_\_\_\_\_  
First name: \_\_\_\_\_ Phone: \_\_\_\_\_  
Surname: \_\_\_\_\_ Mobile: \_\_\_\_\_  
Address: \_\_\_\_\_ Office phone: \_\_\_\_\_  
\_\_\_\_\_ Gift purchased by: \_\_\_\_\_  
Postcode: \_\_\_\_\_

Please be aware that as part of your patronage we will contact you with event invitations, news from the museum and a quarterly newsletter.

### YOUR ANNUAL CONTRIBUTION

#### Inclusive of suggested donation:

- Brunel £1,000  
(benefit £400,  
suggested donation £600)
- Galileo £5,000  
(benefit £1,500,  
suggested donation £3,500)
- Newton £10,000  
(benefit £2,100,  
suggested donation £7,900)

#### Or:

- I wish to opt out of the suggested donation and pay for the Brunel (£400)/Galileo (£1,500)/Newton (£2,100) Circle benefit package only (delete as appropriate)
- I would like to make a donation of £ \_\_\_\_\_

### YOUR SPECIAL INTEREST GROUP

#### I would like to opt into the following group:

- Contemporary Science
- Global Outlook
- Scientific Heritage
- Inspiring Futures

#### Or:

- I do not wish to join a Special Interest Group

### ACKNOWLEDGING YOUR SUPPORT AS A PATRON

Please specify the name(s) by which you wish to be credited in the Science Museum Annual Review and on The Smith Centre Donor Wall: \_\_\_\_\_

#### Or:

- I would like to remain anonymous

## GIFT AID *giftaid it*

I wish to Gift Aid this donation, any donations I make in the future and any I have made in the past 4 years.

I am a UK taxpayer and understand that if I pay less Income Tax and/or Capital Gains Tax than the amount of Gift Aid claimed on all my donations in that tax year it is my responsibility to pay any difference.

Please notify us if you: want to cancel this declaration, change your name or home address, or no longer pay sufficient tax on your income and/or capital gains. If you pay Income Tax at the higher or additional rate and want to receive the additional tax relief due to you, you must include all your Gift Aid donations on your self-assessment tax return or ask HM Revenue & Customs to adjust your tax code.

Signature: \_\_\_\_\_ Date: \_\_\_\_\_

Or:

I am not eligible as a UK taxpayer/do not consent

Gift Aid allows the Science Museum, with your consent, to claim basic-rate tax relief, increasing the value of your donation at no additional cost to you. If you are a higher-rate taxpayer, you can claim higher-rate tax relief on your donation in your self-assessment tax return.

Please note: for Gift Aid purposes, we are required to indicate the commercial value of any benefit we may offer to Patrons. The benefit portion for Brunel Circle Patrons is £400, for Galileo Circle Patrons £1,500 and for Newton Circle Patrons £2,100. Any donation voluntarily given above the agreed values of benefits will be eligible for Gift Aid.

## PAYMENT OPTIONS

### 1. I would like to pay by credit/debit card

Please charge to my:  Mastercard

CVV code:

Visa

Start date:

Switch/Maestro

Expiry date:

Card number:

Issue no:

Name on card: \_\_\_\_\_

### 2. I would like to pay by bank transfer

Please use the reference PATRON followed by your surname (eg PATRON Smith) and forward payment to:

Science Museum Current Account  
Account number: 60910465  
Sort code: 20-06-05

### 3. I WOULD LIKE TO PAY BY DIRECT DEBIT

I would like to pay  monthly

quarterly

annually

Name(s) of Account Holder(s): \_\_\_\_\_

Address: \_\_\_\_\_

Bank/Building Society: \_\_\_\_\_

Account Number:

Sort Code:

Service User Number: 4 3 3 1 5 1

Instruction to your Bank or Building Society to pay by Direct Debit: Please pay the Science Museum Direct Debits from the account detailed in this instruction subject to the safeguards assured by the Direct Debit Guarantee. I understand that this instruction may remain with the Science Museum and, if so, details will be passed electronically to my Bank/Building Society.

Signature: \_\_\_\_\_ Date: \_\_\_\_\_

The Direct Debit Guarantee

- This Guarantee is offered by all Banks and Building Societies that accept instructions to pay Direct Debits.
- If there are any changes to the amount, date or frequency of your Direct Debit, the Science Museum will notify you within 10 working days in advance of your account being debited or as otherwise agreed.
- If you request the Science Museum to collect a payment, confirmation of the amount and date will be given to you at the time of the request.
- If an error is made in the payment of your Direct Debit, by the Science Museum or your Bank or Building Society, you are entitled to a full and immediate refund of the amount paid from your Bank or Building Society.
- If you receive a refund you are not entitled to, you must pay it back when the Science Museum asks you to. You can cancel a Direct Debit at any time by simply contacting your Bank or Building Society. Written confirmation may be required. Please also notify the Science Museum.

**Please note:** Banks and Building Societies may not accept Direct Debit Instructions for some types of account.



### 4. I would like to pay by cheque/CAF voucher

Please make cheques payable to the Science Museum and send to:

Patrons Office  
Development Department  
Science Museum  
Exhibition Road  
London SW7 2DD

### 5. I am a US taxpayer resident in the UK and would like to make my donation through the UK Friends of the Science Museum

Please use the reference PATRON followed by your surname (eg PATRON Smith) and forward payment to:

UK Friends of the Science Museum Limited  
Account number: 50427470  
Sort code: 20-06-05



**Become a Patron today and join us in our mission to inspire the scientists, engineers and innovators of tomorrow.**

What your support means:

£1,000 enables our Outreach team to visit a school or community group to inspire 450 children to engage with science.

£5,000 will support a year's worth of contemporary science activities at Science Museum Lates.

£10,000 can help fund a new exhibition, which could inspire thousands of children to become the scientists and innovators of tomorrow.

